

The Mighty Max

The Mighty Max



U.S.S. Maximillian (NCC-74997)
Science-Fiction Fan Organization

"Reach for the Stars, and Grab the Future"

-Christa McAuliffe, 1986



VOLUME 16, ISSUE 2

Gregtober 2008

Admiralty Board

Commissioner
ADM Matt
Morris

Inspector
General
VADM Greg Dunn

RADM Elaine
Jackson

Command Staff



Commanding
Officer
CDRE Chris
Stephenson

First Officer
CMDR CJ Biro

Records Officer
LCDR Babs
Magera

Ship's Purser
CMDR Susan
Moran

Mighty Max Editorial Staff

Editor-In-Chief
CMDR Susan
Moran

Editor
VADM Greg Dunn

Printer
CMDR Susan
Moran

Mail Services
LT Todd McDaniel

The Mighty Max is the monthly newsletter of the U.S.S. Maximillian (NCC-74997) Sci-Fi Fan Organization. This is only a fan publication, not to infringe on any rights, or licenses



FAREWELL CAPTAIN CRITCH!!!



The crew of the USS Maximillian surprised their captain Commodore Chris Stephenson at the January meeting by presenting him with a new Max Wear Jacket. The Captain was overwhelmed by the crew's demonstration of respect and admiration. Frankly, I think he made have shed a tear or two when it was all said and done.

(more on page 3)

Captain's Log—The Final Entry

CDRE Chris Stephenson
Commanding Officer

And now, the end is here
And so I face the final curtain
My friend, I'll say it clear
I'll state my case, of which I'm certain
I've lived a life that's full
I traveled each and ev'ry highway
And more, much more than this, I did it my way

Regrets, I've had a few
But then again, too few to mention
I did what I had to do and saw it through without exemption
I planned each charted course, each careful step along the byway
And more, much more than this, I did it my way

Yes, there were times, I'm sure you knew
When I bit off more than I could chew
But through it all, when there was doubt
I ate it up and spit it out
I faced it all and I stood tall and did it my way

I've loved, I've laughed and cried
I've had my fill, my share of losing
And now, as tears subside, I find it all so amusing
To think I did all that
And may I say, not in a shy way,
"Oh, no, oh, no, not me, I did it my way"

For what is a man, what has he got?
If not himself, then he has naught
To say the things he truly feels and not the words of one who kneels
The record shows I took the blows and did it my way!



Do you think the Captain is really going to sing?

Messages from Nth Space

LTJG Ryan Stump
Transporter Chief

First, the big news...

Imagine, Uni Eye Lensman Books

Ron Howard's Imagine Entertainment and Universal Pictures are negotiating with the estate of legendary SF author E.E. "Doc" Smith for film rights to Smith's seminal Lensman novels, Al Trestrail, Smith's grandson and manager of his estate, told SCI FI Wire.

The series, first published in the 1930s, is considered one of the earliest serialized SF sagas, and Smith is widely considered the father of the "space opera" genre. The Lensman series has been cited as a primary influence by many of today's authors and filmmakers, including Star Wars' George Lucas and Babylon 5 creator J. Michael Straczynski.

Imagine and Universal are negotiating for an 18-month renewable option, Trestrail said in an interview. "The option would be for 18 months, with another 18-month extension available if needed," he said. "This is being negotiated now. One can only assume at that point if they believe it will be a profitable venture they would move ahead with at least one film."

Smith was a major writer during the pulp science fiction era, starting in the late 1920s. The Lensman series began in 1934 with Triplanetary, a novel serialized in the pages of the magazine Amazing Stories. That novel spawned several sequels.

The series spans millions of years, recounting the struggle between the good Arisians and the evil Eddorians. The books chronicle the rising role of humanity in the ultimate battle as seen through the eyes of the protagonist, Kim Kinison, who comes to control a key artifact: the lens, a bracelet that bestows telepathy and other powers.

(Continued on page 3)



It doesn't say anything about singing in the program.

Messages from Nth Space

LTJG Ryan Stump
Transporter Chief

(Continued from page 2)

Now, my reaction to said news...

WHOOOOHOOOO!

There are only a couple of things that worry me about the article, specifically Doc's grandson talking about only going ahead with one movie, when this thing demands a saga. If any series actually deserved a series of films, it's Lensman. Most of the battles in the series make the Battle of the Line look like a couple of kindergarders fighting over a candy bar, between using entire planets as weapons upto and including causing stars to go supernova simply to stop the enemy fleet.

I certainly hope that the last paragraph there was simply an add-on to the story to inform the readers of what's going on and not something coming out of Imagine, because that is so totally mistating the plot of the books that it's not even funny. True, Kim Kinnison was the Galactic Controller of the Galactic Patrol and the de facto main character, but I hope they don't make him the only Lensman. In the books, there were millions of them, similar to the Green Lantern Corp. (Which is based off the Lensmen anyway).

Either way, I'll be setting out front of the movie theater for a week before release waiting to get tickets.



Farewell to Captain Critch

CMDR Susan Moran
Ship's Purser / Chief of Science

The January meeting was the quintessential farewell to a good leader. Chris has been the Captain for so long that some current crew members have never know any other captain. Under his leadership the ship has grown. (some may say it has expanded too far). But as all things are cyclical, the Max is contracting back to a more manageable size. When Rob and Greg started this organization so many years ago they never dreamed that it would last so long. But I think one of the reasons that keeps it going is the dedication of people like Chris. For the past four years the Max has been his life. He would make events happen by sheer will power. And the crew did appreciate his hard work, even if sometimes it didn't seem so. But that night in January when we elected a new command staff it dawned on us just how much we would miss him and to show our appreciation we gave him a standing ovation. (this too brought a tear to his eye, and to other in the crowd as well).

So farewell My Captain, My Captain as you retire from command, but not entirely from the ship. Use your time well to write that novel. And continue the never ending saga of the Maximillian. Take care, Chris and thank you for your service.



Meeting Minutes

LT Babs Magera
Records Officer / Chief of Operations

Presenting the January 2008 meeting of the USS Maxgard...no wait...ASMILLIAN..naw, that's not right. Oh! Maximillian! This is the final meeting of the current Senior staff, so take a good last look at us! Meeting will be truncated because of Elections.

Introductions..and many hugs for Overload!

First off is the Captain's final report, and it goes out with a bang! The website has been fixed, as it was pointing to Starbase's site! No royalties for us though. Pity. As for the newsletter, submissions need to be sent to maxsubmissions@gmail.com by the 1st of the month!

First officer Horta gives his report after that! Let's rock (and while I'm at it, I have GOT to think of better puns)! Yeoman and ship's librarian are open positions. After that...the torch is passed to ME!

fanfare Okay, time for Overload! Lessee! I've opened myself up for commissions! So folks in the furry subculture who have been wanting that special design of their fursona, or had that character pose running around in their head have their chance at me art! So far, things have been prosperous! :)

T'Purr mentioned that Auction raised money, and then the holiday party absorbed costs. Charity for the auction needs to be determined. After a vote, the Red Cross is our decided new charity! Also, the list for reupps was run down. Get your money in people, or I access my thumb-breaking subroutine. *cracks knuckles*

Admiralty:

Only Blobbin, who presented Chris with a new Max jacket, donated by all of us on the ship!

I miss you Matt. *blubber* You're not even on Yahoo anymore! *BAWL*

sings And the rest...:

*At the door for Dragon*Con is \$80. So sign up in advance.

*Rachel says that HP-Ohio is discussing dates for the Quidditch season, on the 4th Saturday of every month.

*Vulkon is March 2 - 4, according to Melinda from Starbase. Starbase is also starting a rewards program where you get a membership card that can be stamped and put towards a goft certificate.

*Kathy and Ralph moved to the Asgard in Lancaster. Yours truly shall be possibly assisting in this organization as well so stay toned!

*Skrit has a fanfare for Blobbin! And his job goes well, though he may not be able to get off work in May. Which leaves us Skritless. I repeat, Skritless.

*Ohayocon reached 6000 attendees, according to Dan, and is now the 12th largest anime con in North America.

Old business:

*Marcon - will have a table, though there have been no replies to emails. Natalie has been drafted into the logistics team, and needs help. Also, the Anime video room needs fleshing out. Regarding skits, submit scripts this year! Scripts need to be in by Feb./March!

*Dinner this month will be at Noodles and Company on the last Wednesday of the month.

*Awards were mentioned to Keith and Dan who were promoted to Lt. JG, while Keith won the Starship Achievement award for his work on Context.

New business:

ELECTION!!! The votes are in!

Captain: Cj Biro

First Officer: Lisa Lombardi

Records Officer: Overload Soong-Maddox (AKA Babs Magera...thassme)

Treasurer: Erica Stanley

So that my friends is the end.

...Come on Databit. Let's blow this popsicle stand and get us some ice cream instead.

:)

Candidates still needed for the following Ship Positions

Ship's Librarian

Command Staff Yeoman

Submissions for the March 2008 edition of the Mighty Max are due on **March 1, 2008**. Submit to maxsubmissions@gmail.com Or 614-284-4962

Security Report

CMDR Nathan Cobaugh
Security Officer

Kind of a slow month, other than work, work, work. I announced at the previous meeting that I would be stepping back from the Maximillian for a while to focus on my new job, so I just wanted to let everyone know that I may not be around for the anniversary dinner, unless it is last minute. I will still continue to do the Mighty Max Adventures for the newsletter. I also completed a musical theme for Blobbin. Naturally, there will be a recording of "Blobbin's theme" available by next month. Maybe it can be posted and anyone can stream it, from the Max's site. That is of course, providing it is ok with the command board.

Currently, time is limited as now I am working at Barnes and Noble on Sundays at the Lennox, as well as being a sound technician at church. Amazingly, going from unemployment to working 3 jobs is something I do not intend to take for granted. This month the Mighty Max Adventures features a brief transition of Critch to CJ in the chain of command. Hopefully, CJ won't kill me for the blatant reference to Spaceballs. Just joking, CJ! Anyhoo, if time provides, there will be an anime review in this month's edition of the newsletter, if not I will do double duty next month. That is of course, if I do not collapse at my computer from exhaustion from working so much. And as if that was not enough I am seeking to volunteer some time working at one of the local radio stations.

In the interest of developing more music, I am gathering up as much Japanese soundtracks as well as some of the latest movie soundtracks. Speaking of music, I did manage to catch Cloverfield, and of course, I could not help but notice, there was no music added until the end credits. Kind of unique to the film, but I kept expecting some foreboding music or themes. Not complaining, mind you, just used to hearing music during a movie. Also I did manage to catch Sweeney Todd, which I thought was done well. Never thought I would ever hear Depp sing well, but he does pull off the role. That pretty much sums up the security report for this month, so Happy President's Day and Valentine's Day everyone!



Death Note Review

CMDR Nathan Cobaugh
Security Officer

What do you get when you have a notebook that you can write the cause and time of death in, and ultimately play God? Death Note of course. Death Note is a manga and anime production that showcases the premise of Death Gods passing judgement through a Death Note. One Death God drops his notebook in our reality and when a genius high school student picks it up, the adventure just starts to begin.

Yagami Light, the son of a police officer, is the genius high school student who winds up playing God, and proclaims himself Kira through the people he winds up killing, which of course are criminals. Light ultimately, believes he is the final word in judgement, and eventually catches the attention of the law enforcement agencies of the world. Light battles wits with the sharpest minds and a constant cat and mouse game rages



through the entire series. The anime production only spans 25-26 episodes and has gained more attention through Adult Swim on Cartoon

Network. The manga is currently under the Shonen Jump label and due to its success, has launched into live action films as well. Even the soundtrack is exceptional, containing a nice blend of rock music and special FX. The entire series is available on DVD through Viz Media, and hopefully the live action movies sometime in 2008. The movies did exceptionally well in the Japanese box office, being one of the most popular productions in Japan in regards to manga and anime.

Fans of anime will definitely enjoy this series as it contains plenty of plot twists and action. Easy enough to follow and yet complex enough that it will appeal to the intellectual minds who enjoy a lot of strategy and intricate character development. I have seen the entire series and would definitely rate this as one of the best I have seen in a long time. Half of the time you will keep guessing what will happen, and the other half you will see coming a mile away. Granted the main two characters are like high school age, but for fans of Bleach, Death Note will be right around the corner.

Images from the anime are screenshots.



Total Eclipse of the Moon 2/20/08

Submitted by LTJG Ed Locke
Ambassador to Fishnet Mafia

Introduction

A total eclipse of the Moon occurs during the night of Wednesday, February 20/21, 2008. The entire event is visible from South America and most of North America (on Feb. 20) as well as Western Europe, Africa, and western Asia (on Feb. 21). During a total lunar eclipse, the Moon's disk can take on a dramatically colorful appearance from bright orange to blood red to dark brown and (rarely) very dark gray.

An eclipse of the Moon can only take place at Full Moon, and only if the Moon passes through some portion of Earth's shadow. The shadow is actually composed of two cone-shaped parts, one nested inside the other. The outer shadow or penumbra is a zone where Earth blocks some (but not all) of the Sun's rays. In contrast, the inner shadow or umbra is a region where Earth blocks all direct sunlight from reaching the Moon.

If only part of the Moon passes through the umbra, a partial eclipse is seen. However, if the entire Moon passes through the umbral shadow, then a total eclipse of the Moon occurs. For more information on how, what, why, where and when of lunar eclipses, see the special web page lunar eclipses for beginners.

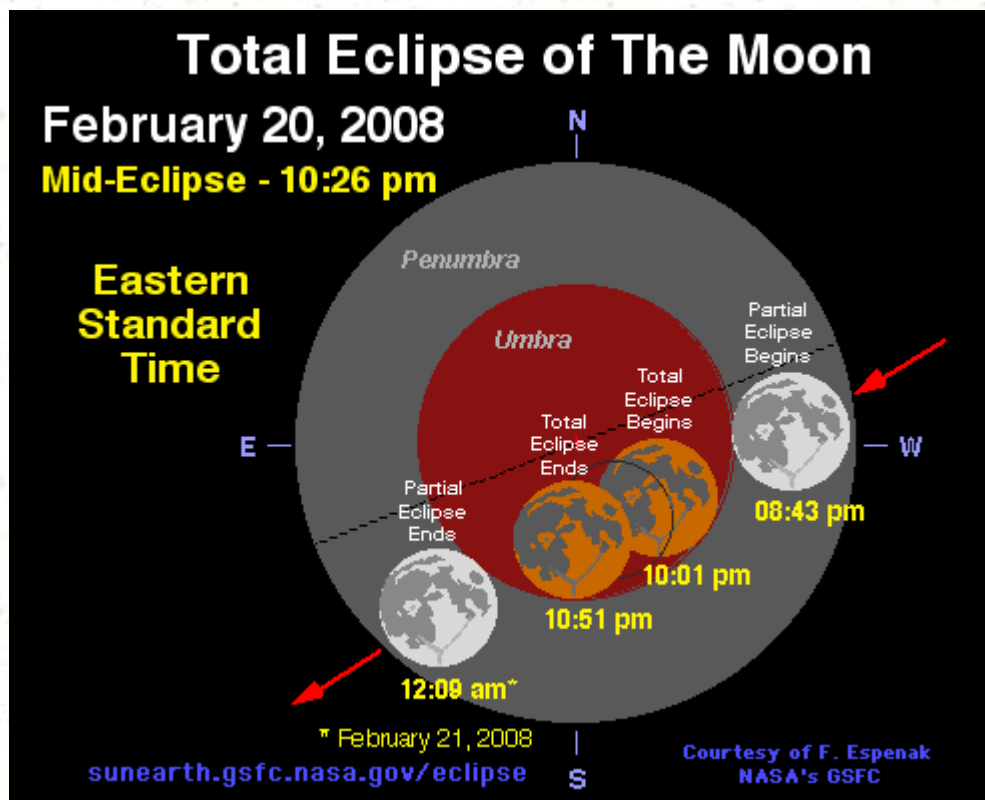
Times and Phases of the Total Lunar Eclipse of February 20/21, 2008

From start to finish, February's lunar eclipse lasts about three hours and twenty-six minutes (not including the

penumbral phases which are very difficult to see). The partial eclipse begins as the Moon's eastern edge slowly moves into the Earth's umbral shadow. During the partial phases, it takes just over an hour for the Moon's orbital motion to carry it entirely within the Earth's dark umbra. The color and brightness of the totally eclipsed Moon can vary considerably from one eclipse to another. Dark eclipses are caused by volcanic gas and dust which filters and blocks much of the Sun's light from reaching the Moon. But since no major volcanic eruptions have taken place recently, the Moon will probably take on a vivid red or orange color during the total phase. After the total phase ends, it is once again followed by a partial eclipse as the Moon gradually leaves the umbral shadow.

The total phase of a lunar eclipse is called totality. At this time, the Moon is completely immersed within the Earth's dark umbral shadow. During the February 20 eclipse totality will last just under 50 minutes. This is quite a bit less than the last total lunar eclipse (August 28, 2007) which lasted 90 minutes.

The major phases of the eclipse occur as follows (all times are GMT or Greenwich Mean Time). The partial eclipse commences with first umbral contact at 01:43 GMT. Totality begins at 03:01 GMT and lasts until 03:51 GMT. The partial phases end at 05:09 GMT. Eclipse times for time zones in the United States and Canada are shown in the following table

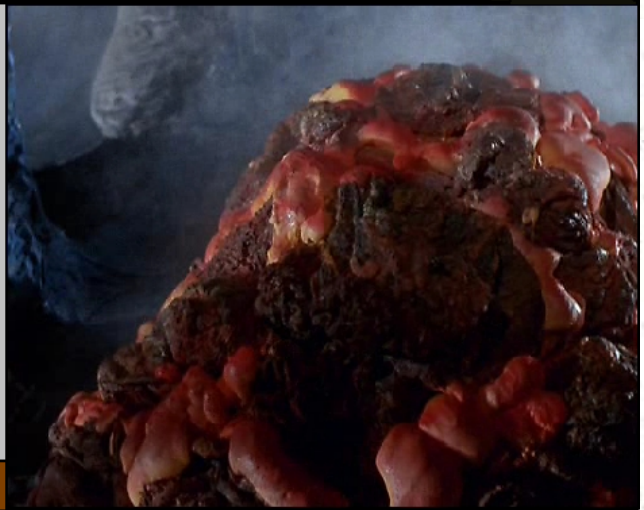


MIGHTY MAX Adventures

by **Skrit**

THIS MONTH:
Change of Command...

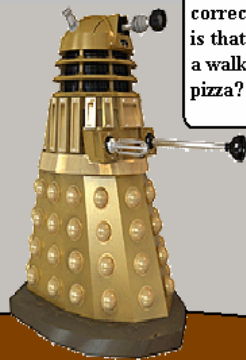
Well, I am finally no longer in command, presenting the new CO of the Maximillian...



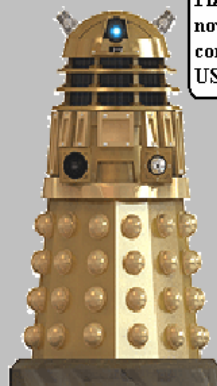
Is that who I think it is? Well, shut me down, it has to be...



Excuse me, but are my sensors working correctly, or is that really a walking pizza?



Spaceball alert, spaceball alert, Pizza the Hutt has now assumed command of the USS Maximillian.



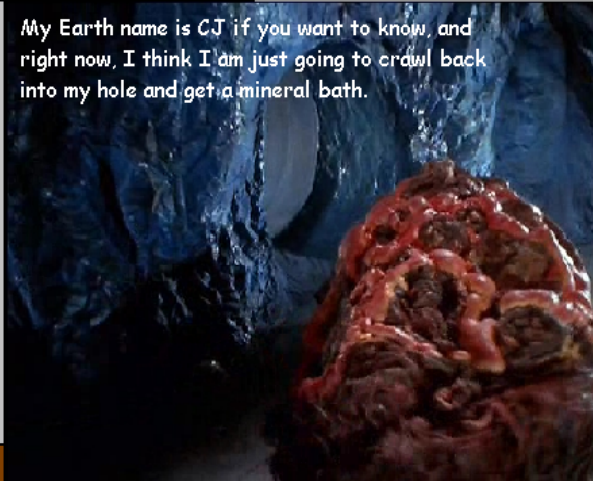
And I was honestly hoping that we would not go there, what's next?



Admiral, I am still combing the ship to make sure that there are no more Daleks, however, I appear to have missed two of them.



My Earth name is CJ if you want to know, and right now, I think I am just going to crawl back into my hole and get a mineral bath.



Tune in next month for a new Mighty Max Adventure!

This edition of The Mighty Max Adventures is brought to you by Skritweb Productions.

Belated Greetings for a New Year

*CDR John Chubb
Chief of Armory*

Happy New Year. Sorry the greeting is late. A lot going on.

First off I have successfully gotten a job at Community Bus Service, which should hopefully give my bank accounts a much needed boost along with my Best Buy job, as I am in HUMONGOUS debt right now-thanks to my car.

There seem to be coolant problems as it's overheating. I've had the thermostat replaced, lines replaced, I'm dreading what's next.

Oh by the way, it's for sale, provided I don't junk it first.

Best Buy I've had to cut hours on, not that they were offering me much anyway. But a bi-weekly pay system that gives less than 30 hours just wasn't practical at the current time.

I have got my CDL-B license and have a job as a substitute driver for a company called Community Bus Service. I do some routes, and I'm learning along the way. Hopefully I'll be out of debt soon enough after a couple of months. Between two jobs I should make some good bank.

I still do fanfiction work. I'm working on another chapter of a Doctor Who/Hannah Montana crossover believe it or not. A unique combination but one I've had fun with. Also there are a few fan vids with Doctor Who that use Hannah Montana songs believe it or not.

I have not been able to focus on San Diego this year. I have my ticket to go to DragonCon, so hopefully I'll be able to bump a ride and share costs.

With the car I'm already off to a rocky start, but hopefully things will smooth out. I'm also looking to do major work on my trailer and am TRYING to set aside money for repairs on that. Emphasis on 'TRYING'.

AND I should hopefully have that long awaited Shatner rebuttal up soon. It's still in handwritten stage, but when it comes to typing out a speech and writing a long fic chapter the fic wins every time.

Oh well, fingers crossed and here's hoping this year comes out better.

Cheers.

News from Starbase

www.starbasecolumbus.com

Hi to all!

I've been in contact with the folks at Vulkan and have some info on ticket prices for you.

You may want to post this for your members in your respective newsletters.

Vulkan Ticket prices

VIP - \$399 - Reserved seating, 1 autograph from both featured guests & 1 autograph from 1 bonus guest, admission to the banquet, Captain's cocktail party with the celebrities and the Enterprise Blues Band are included.

Platinum - \$269 - Reserved seating behind VIP section, 1 autograph from both featured guests, Admission to Enterprise Blues Band and Captain's Cocktail party are included.

Gold - \$159 - Reserved seating behind Platinum section, 1 autograph from both featured guests, and Admission to Enterprise Blues Band.

Silver - \$99 - Reserved seating behind gold section and 1 autograph from both featured guests.

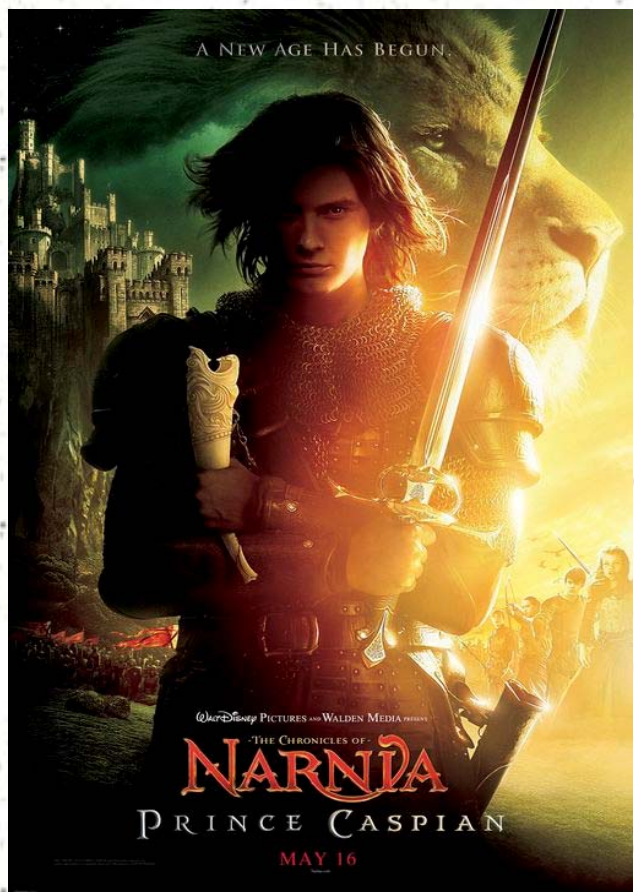
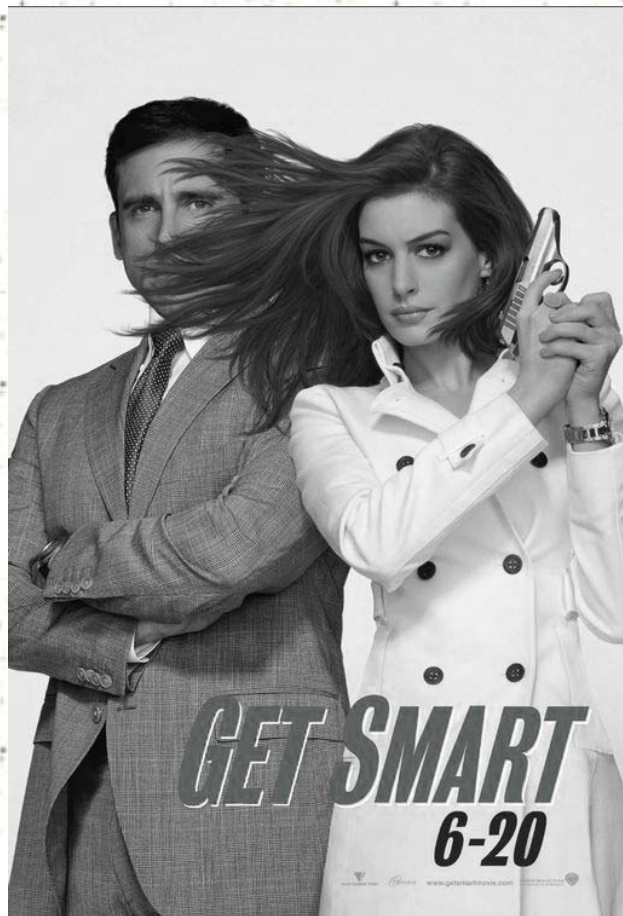
Bronze - \$50 - Reserved seating behind Silver section - no autographs. This is like a whole weekend general admission ticket.

Banquet ticket is \$99.00 if not included in the above ticket packages.

All of the Above are will get you into the convention for the whole weekend(Except the Banquet ticket) For those who can attend only one day of the convention there will be a ONE DAY general admission ticket available AT THE DOOR ONLY for \$25.00. This is NOT listed on the Vulkan website but they assured me it will be available.

Don't have any info on fan tables yet but hope to have something soon.

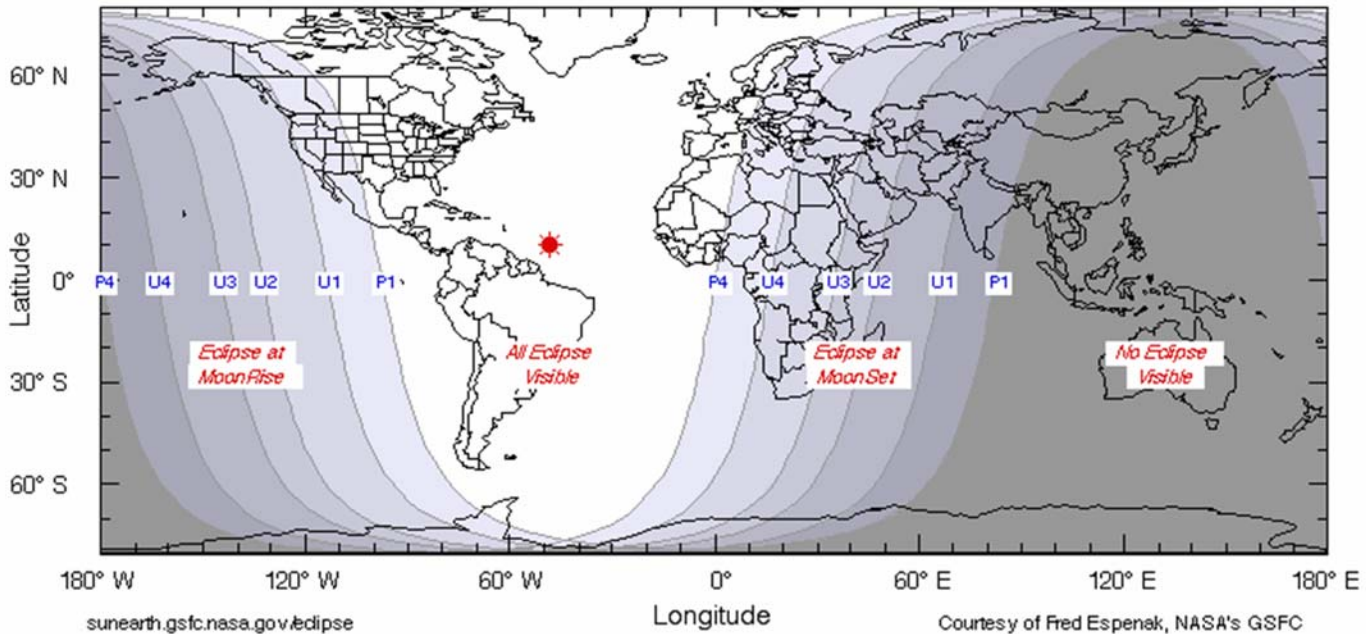
Melinda @ Star Base



Total Eclipse of the Moon 2/20/08

Submitted by LTJG Ed Locke
Ambassador to Fishnet Mafia

Total Lunar Eclipse: 2008 Feb 21



(Continued from page 6)

Visibility of the Total Lunar Eclipse of February 20, 2008
February's lunar eclipse is well-placed for North and South America as well as Europe and Africa. Observers along North America's west coast miss the early stages of the partial eclipse because it begins before moon rise. Alaskans in Anchorage and Fairbanks experience moonrise during totality but bright evening twilight will make it difficult for sourdoughs to view the event. Western Europe and northwest Africa also see the entire eclipse. Further to the east (east Africa and central Asia), the Moon sets before the eclipse ends. None of the eclipse is visible from eastern Asia or Australia.

Preceding and following the eclipse are hour-long penumbral phases but these are faint and quite difficult to see. The more interesting and photogenic partial and total phases always take center stage to the penumbral phases.

The map above shows the geographic regions of visibility for each phase of the eclipse. The entire eclipse is visible from start to finish in the white (unshaded) portion of the map, while none of the eclipse can be seen from the dark gray areas.

For anyone located in the blue shaded region labeled Eclipse at Moonset, this means that the Moon will set while some phase of the eclipse is already in progress. The contact curves labeled P1, U1, U2, U3, U4, and P4 represent each phase of the eclipse (see the key above). If you are east (right) of a particular curve, that phase occurs after moonset and you will

not see it. However, if you are west (left) of a curve, that phase occurs before moonset and you will see it (weather permitting).

For example, on the above map Turkey lies west (left) of the U3 curve (total eclipse end) and east (right) of the curve U4 (partial eclipse ends). This means that from this region, the Moon sets during the partial phases following totality.

For observers located within the second blue shaded region labeled Eclipse at Moonrise, the situation is reversed. Here the Moon rises while some phase of the eclipse is already in progress. If you are west (left) of a particular curve (P1, U1, U2, U3, U4, or P4), that phase occurs before moonrise and you will not see it. However, if you are east (right) of a contact curve, that phase occurs after moonrise and you will see it (weather permitting).

All total eclipses start with a penumbral followed by a partial eclipse, and end with a partial followed by a penumbral eclipse (the total eclipse is sandwiched in the middle). Since the penumbral phases of the eclipse are so difficult to see, we will ignore them.

Wonderful Totality

At the instant of mid-totality (03:37 GMT), the Moon will lie in the zenith for observers in French Guiana. At this time, the umbral eclipse magnitude peaks at 1.1062.

From the diagram above, it is clear that the northern (top) edge of the Moon will dip much deeper into the Earth's shadow than will the southern (bottom) edge. Since the

(Continued on page 11)

Total Eclipse of the Moon 2/20/08

Submitted by LTJG Ed Locke
Ambassador to Fishnet Mafia

(Continued from page 10)

Earth's umbral shadow is darker in the center than at the edge, the Moon's appearance will likely change dramatically with time. A large variation in shadow brightness can be expected and observers are encouraged to estimate the Danjon value at different times during totality (Danjon Brightness Scale). Note that it may also be necessary to assign different Danjon values to different portions of the Moon at different times.

This could be an excellent opportunity for budding astronomers and students to test their observing skills. Try recording your estimates of the Moon's brightness every ten minutes during totality using the Danjon Scale. Compare your results with your companions and classmates and discover how the Moon's appearance changes during the total eclipse. The brightness of the totally eclipsed Moon is very sensitive to the presence of volcanic dust in Earth's atmosphere. As part of a continuing research project, Dr. Richard Keen has been using reports of lunar eclipse brightnesses to calculate a history of optical thicknesses of volcanic dust layers (see: What Will 2004's Lunar Eclipses Look Like?). If you'd like to help Dr. Keen by making eclipse observations, you can contact him at Richard.Keen@Colorado.EDU.

The amount of dust and sulfur dioxide in Earth's atmosphere also has an effect on the diameter of the umbral shadow. Amateur astronomers with telescopes can make careful timings of when some of the Moon's major craters enter or exit the umbra. Such observations are valuable in determining the enlargement of Earth's shadow. A table of crater predictions identifies twenty well-defined craters useful for this purpose. For more information, see: Crater Timings During Lunar Eclipses.

An eclipse of the Moon also presents a tempting subject to photograph. Since the Moon appears quite small in the sky, you'll need a fairly powerful telephoto lens (400 mm or more) or even a small telescope to attach to your camera. A typical ISO 400 speed (either digital or film) is a good choice. For more information on equipment, film, recommended exposures and additional tips, see lunar eclipse photography.

Unlike solar eclipses, lunar eclipses are completely safe to watch. Protective filters are not necessary and neither is a telescope. A lunar eclipse can be observed with nothing more than the naked eye. However, a pair of binoculars will magnify the view and make the red coloration brighter and easier to see. A standard pair of 7x35 or 7x50 binoculars is sufficient.

During the eclipse, the Moon will be in Leo. Saturn and bright star Regulus are only 3 degrees east and west, respectively, of the Moon. Gemini, Orion, Taurus and other winter constellations will occupy the south and western sky for

North American eclipse watchers. viewers.

Although total eclipses of the Moon are of limited scientific value, they are remarkably beautiful events which do not require expensive equipment. They help to cultivate interest in science and astronomy in children and to provide a unique learning opportunity for families, students and teachers. To the nature lover and naturalist, the lunar eclipse can be appreciated and celebrated as an event which vividly illustrates our place among the planets in the solar system. The three dimensional reality of our universe comes alive in a graceful celestial ballet as the Moon swings through the Earth's shadow. Hope for clear skies, dress warmly and enjoy the show!

Eclipse Frequency and Future Eclipses

During the five millennium period from 2000 BC through AD 3000, there are 7,718 eclipses[1] of the Moon (including both partial and total eclipses). From 0 to 3 lunar eclipses (partial or total) occur each year. The last time three total lunar eclipses occurred in one calendar year was in 1982. On average, partial eclipses slightly outnumber total eclipses by 7 to 6[2].

[1] Only eclipses where the Moon passes through Earth's umbral shadow are included in these values. A minor type of eclipse is the penumbral eclipse which occurs when the Moon passes through the Earth's faint penumbral shadow. Penumbral eclipses are rarely discernible to the naked eye and are of lesser importance than umbral eclipses.

[2] Penumbral eclipses are excluded from these statistics. The last total lunar eclipse visible from the entire continental United States occurred on August 28, 2007. North Americans will have their next opportunity to see a total lunar eclipse on 2010 Dec 21.

The table below lists every lunar eclipse from 2007 through 2012. Click on the eclipse Date to see a map and diagram of an eclipse. Although penumbral lunar eclipses are included in this list, they are usually quite difficult to observe because of their subtlety. The penumbra is a partial shadow which still permits some direct sunlight to reach the Moon. The Umbral Eclipse Magnitude is the fraction on the Moon's diameter immersed in the umbra at maximum eclipse. For values of 1.0 or greater, the eclipse is total. For negative values, the eclipse is penumbral. The Total Duration is the duration of the total phase (total eclipses only)

Go to [NASA Solar Eclipse Page](#)

Go to [NASA Lunar Eclipse Page](#)

Go to [NASA Planetary Transit Page](#)

Go to [NASA Eclipse Resource Page](#)

March 2008

Sun	Mon	Tue	Wed	Thu	Fri	Sat
						1 Rocky Horror Picture Show 11:30p
2	3 TV Night	4	5	6	7	8 Max Meeting 5:00p
9	10 TV Night	11	12	13 Mike Stanley's Birthday	14	15 Columbus Meeting 5:00p Rocky Horror 11:30p
16	17 TV Night	18 Catherine Biro's Birthday	19	20	21	22
23	24 TV Night	25 Clarence Bradley's Birthday	26	27	28	29
30						



SCIENCE FICTION

U.S.S. MAXIMILLIAN

FAN ORGANIZATION

THE MAXIMILLIAN STORE

MAX WEAR

We have PAYPAL! ACCOUNT: equezumre@gmail.com

Sports Shirt with Max Logo

5035 CS



S-XL --\$28.00
XXL --\$31.00
XXXL --\$31.50

Logo:

Gold Black

Registry:

74997 72016

Available colors:

Red/Black Gold/Black
 Orange/Black Royal Blue/Black
 Purple/Black Kelly/Black

Size: _____ Quantity: _____ Total Price: _____

Short Sleeve Golf Shirt w/ Logo

437M J



S-XL --\$23.00
XXL --\$25.00
XXXL --\$26.00

Logo:

Gold Black

Registry:

74997 72016

Available colors:

White Deep Purple Light Blue
 Birch Forest Green Maize
 Sports Grey Gold Maroon
 Black True Royal Putty
 Orange Vintage Navy V Forest
 California Blue Kelly Putty
 True Navy True Red

Size: _____ Quantity: _____ Total Price: _____

Long Sleeve Golf Shirt w/ Logo

437ML J



S-XL --\$26.00
XXL --\$27.00
XXXL --\$28.00

Logo:

Gold Black

Registry:

74997 72016

Available colors:

White
 True Royal
 True Red
 Black
 Forest Green
 True Navy

Size: _____ Quantity: _____ Total Price: _____

Jacket 9140

U.S.S. Maximillian on back,
name above pocket, Black
with Gold Lettering

S-XL --\$89.00

XXL --\$91.50

XXXL --\$94.00

Registry:

74997 72016

Size: _____ Quantity: _____ Total Price: _____

Short Sleeve T-Shirt w/ Logo

29M J



S-XL --\$14.00
XXL --\$14.50
XXXL --\$16.00

Logo:

Gold Black

Registry:

74997 72016

Available colors:

White Deep Purple Light Blue
 Birch Forest Green Island Yellow
 Oxford Gold Deep Purple
 Black True Royal True Red
 Orange Jade Green Mist
 California Blue Kelly Aqua
 True Navy True Red Cyber Pink

Size: _____ Quantity: _____ Total Price: _____

Long Sleeve T-Shirt w/ Logo

29LS J



S-XL --\$16.00
XXL --\$17.50
XXXL --\$18.00

Logo:

Gold Black

Registry:

74997 72016

Available colors:

White True Red
 Birch Light Blue
 Oxford Gold
 Black Maroon
 True Navy
 Deep Purple
 Forest Green

Size: _____ Quantity: _____ Total Price: _____

Jean Shirt - Short or Long, w/ Logo



Faded Demin

Demin

74997

72016

Short Sleeve
J16 J

Long Sleeve
J10 J

S-XL --\$24.00

XXL --\$26.00

XXXL --\$28.50

Size: _____ Quantity: _____ Total Price: _____

Ball Cap Hats



Black Only

Registry:

74997 72016

Wool \$16.50

Mesh \$14.50

Twill \$13.50

Type: _____ Quantity: _____ Total Price: _____

MAX ITEMS

We have PAYPAL! ACCOUNT: equezumre@gmail.com

Needs of the Many
Audio Short Story Part I
\$5.00 Each



Quantity: _____ Total Price: _____

Max Business Cards
Info for Card: Name,
Position, Address, E-mail,
Phone, & Website



100 for \$20.00
500 for \$30.00

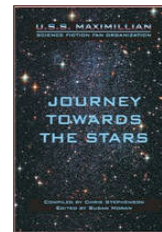
Newsletter Back Issues
Hard copy are \$3.00 each
W/ CD are \$6.00 each

Check with Greg for availability
(tobecat@rocketmail.com)

\$3 x _____ = _____ +

\$6 x _____ = _____ =

Total Price: _____



Maximillian SE Collection
Journey Towards the Stars
Star Trek Maximillian:
First Anthology
Collection of fiction from and
about the U.S.S. Maximillian
crewmembers. 463pgs

\$20.89 each + \$5.00 S&H

<http://www.cafepress.com/maximillian>

Sovereign Patches
(2 still available)
\$6.00

Quantity: _____

Total Price: _____



Quantity: _____ Total Price: _____

Instructions: Complete order form remembering to select size, color and logo options. Fill out contact information and order total. Select method of payment and delivery option. Items MUST be paid in full when order is placed. Items will be available within 3 weeks. Please return completed order form at next meeting or send with payment to: USS Maximillian 1300 Westwood Ave Columbus, Ohio 43212 *-If items are to be mailed to your address, please add shipping cost.

NAME: _____ DATE: _____

ADDRESS: _____

CITY / STATE: _____ ZIP: _____

PHONE: _____

E-MAIL: _____

ORDER TOTAL: _____

SHIPPING:* _____ \$4.00

GRAND TOTAL: _____

PAYMENT METHOD: CHECK

CASH

DELIVERY METHOD: MAIL

PICK UP AT NEXT MEETING

OFFICIAL USE ONLY

DATE O/R: _____

VERIFIED BY: _____

DATE O/P: _____

RECEIVED: _____

SHIPPED: _____

DELIVERED: _____

**THE MIGHTY MAX
FEBRUARY 2008**

Commodore Chris Stephenson
6840 Clearhurst Drive
Columbus, Ohio, 43229
Phone: 614-284-4962
Email: critchstarblade@gmail.com
Newsletter Submissions Due March 1st
maxsubmissions@gmail.com

[HTTP://GROUPS.YAHOO.COM/GROUPS/MAX74997](http://groups.yahoo.com/groups/max74997)
[HTTP://WWW.MAXIMILLIAN.ORG](http://www.maximillian.org)

Happy February Birthday:
Gregory Dunn and Steve Pompa

